

Figure 1 Original IKONOS images and pan-sharpening results using different methods. Note that only a subset of the images is shown. (a) PAN image (1m, 256×256). (b) Upsampled MS image. (c) GIHS. (d) GIHSA. (e) Adaptive IHS. (f) TVR. (g) MTF-CON. (h) Proposed.

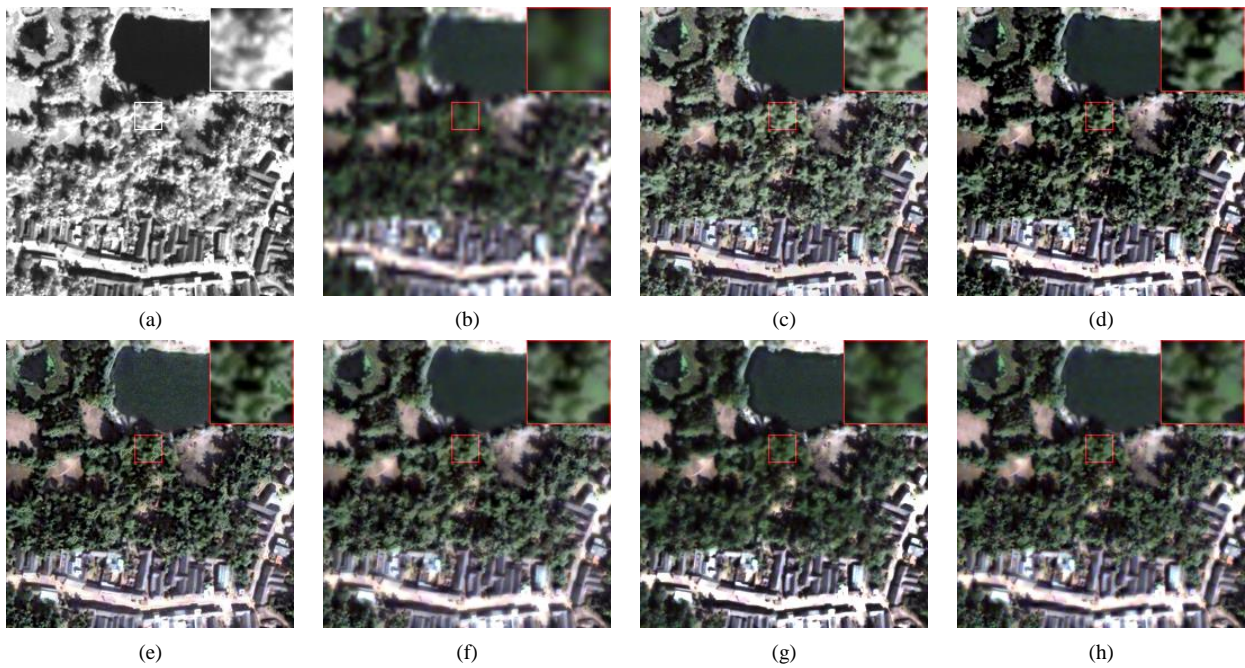


Figure 2 Original QuickBird images and pan-sharpening results using different methods. Note that only a subset of the images is shown. (a) PAN image (0.6m, 256×256). (b) Upsampled MS image. (c) GIHS. (d) GIHSA. (e) Adaptive IHS. (f) TVR. (g) MTF-CON. (h) Proposed.

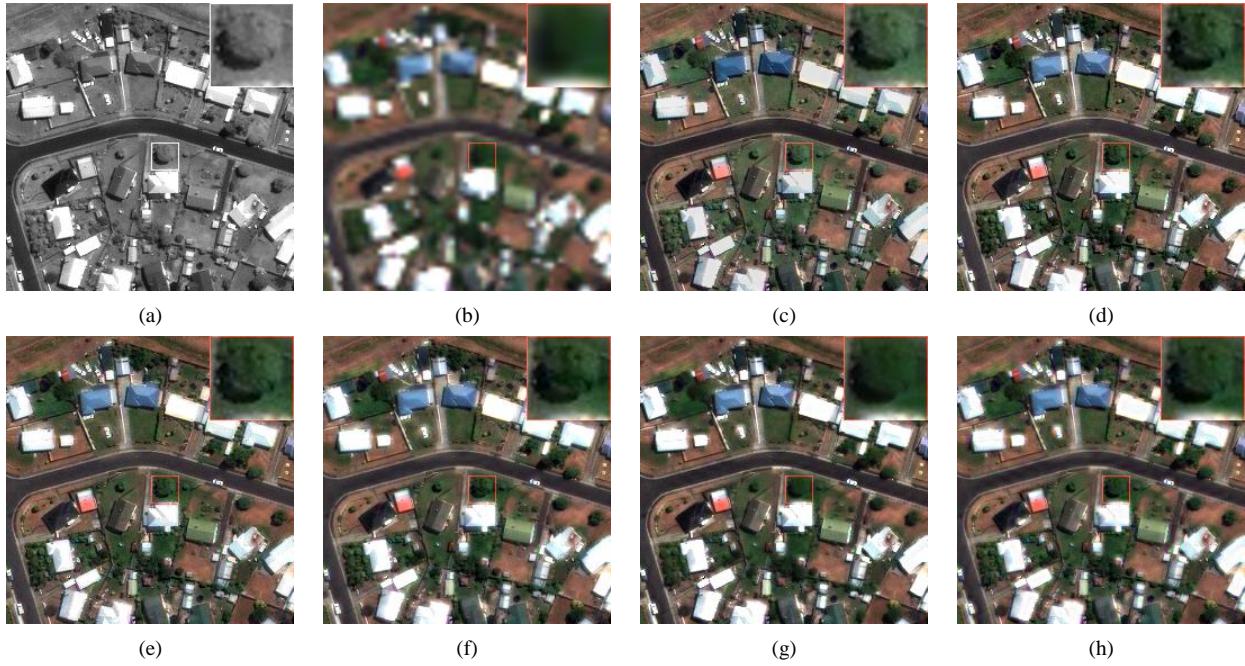


Figure 3 Original GeoEye-1 images and pan-sharpening results using different methods. Note that only a subset of the images is shown. (a) PAN image (0.4m, 256×256). (b) Upsampled MS image. (c) GIHS. (d) GIHSA. (e) Adaptive IHS. (f) TVR. (g) MTF-CON. (h) Proposed.